

# T-Edge 10

Maximum efficiency.  
Minimum costs.



Class B Performance

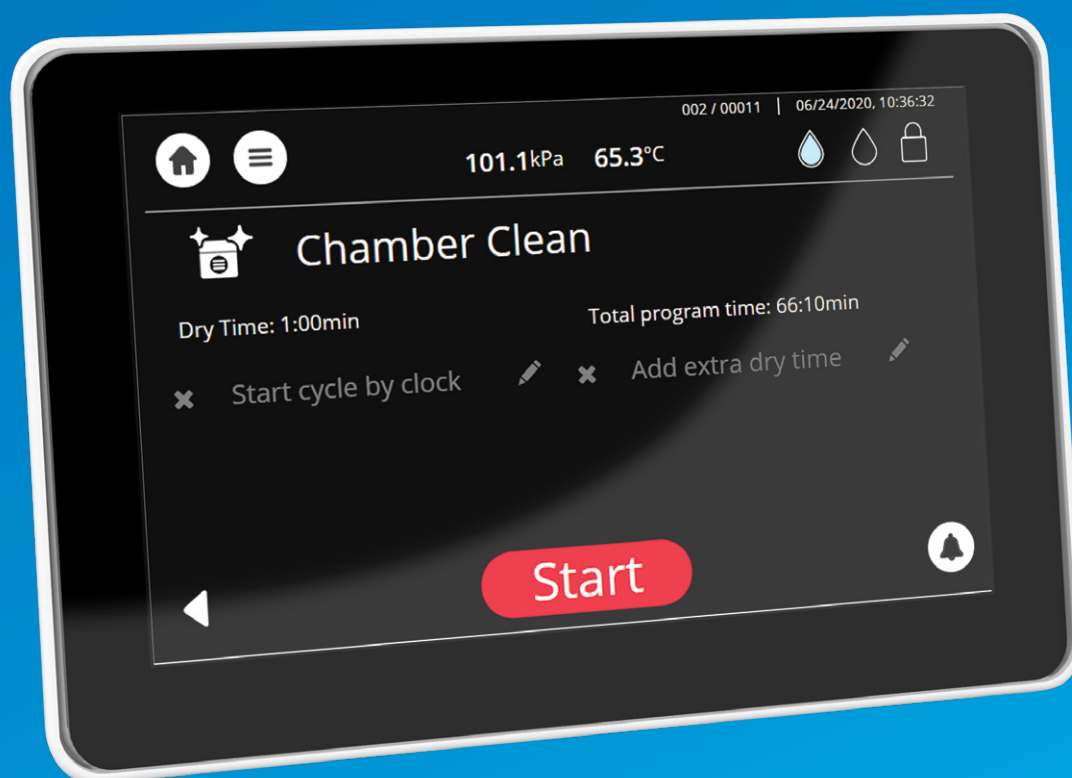
The Fully Automatic Sterilization Autoclave  
Designed for Dental Clinics and Small Medical Practices

  
**Tuttnauer**  
Innovation · Legacy · Partnership

# It's nice to meet you. I'm the new T-Edge 10 and I'll be with you every step of the way.

## Sterilization at the Click of a Button

Just select the required program and press "start".  
I'll take care of everything else. I like to call this "Click and Go".



The fully automatic sterilization autoclave  
from start to finish

# So much more than just an Autoclave

Your skills are needed in the clinic  
and your time is of the essence.  
That's why I want to free you up.

- ◆ Compliance with strict international standards
- ◆ Clinically proven sterilization capabilities
- ◆ High-resolution tactile touchpad
- ◆ Innovative original technology
- ◆ Simple-to-use interface
- ◆ Chic design
- ◆ Great user experience



Let me take care of the sterilization process  
while you take care of your patients!

# Maximum efficiency. Minimum costs.



## Maximize your time with patients

- Click & go
- Short cycle times
- Remote monitoring capabilities\*\*
- Reliable sterilization processes



## Enhance your patients' safety

- Multiple traceability options
- Pre-programmed test cycles
- Protect your clinic's reputation
- Compliance with strict safety standards



## Minimize your operating costs

- Innovative affordable autoclave
- Extended lifecycle
- Decreased maintenance costs
- Reduced daily and weekly operating costs

Increase your patients' satisfaction and loyalty by decreasing the time and effort you need to spend on sterilization

# I'm so compact and stylish, you can display me anywhere.



- Optimal chamber capacity (more than 75%), with 5 extra-long trays\*
- Convenient and easy loading with door opening to 110°
- Assorted water filling and drainage methods, even if autoclave is placed inside a cabin (top, front or automatic)
- Fast cycle time, including sterilization and comprehensive drying
- Range of automatic one-button programs, including test programs
- User-friendly touchpad and control panel for displaying programs, cycles times, water levels and more
- Advanced documentation and traceability options and barcode
- Remote Wi-Fi monitoring via smartphone or tablet\*\*



## T-Edge 10

As simple as using your smartphone

\* The exact tray models will be provided as soon as available

\*\*Remote monitoring capabilities will be available in the near future. Free upgrade will be offered under company terms.

# My increased chamber capacity and decreased cycle time **means minimized costs for your clinic**

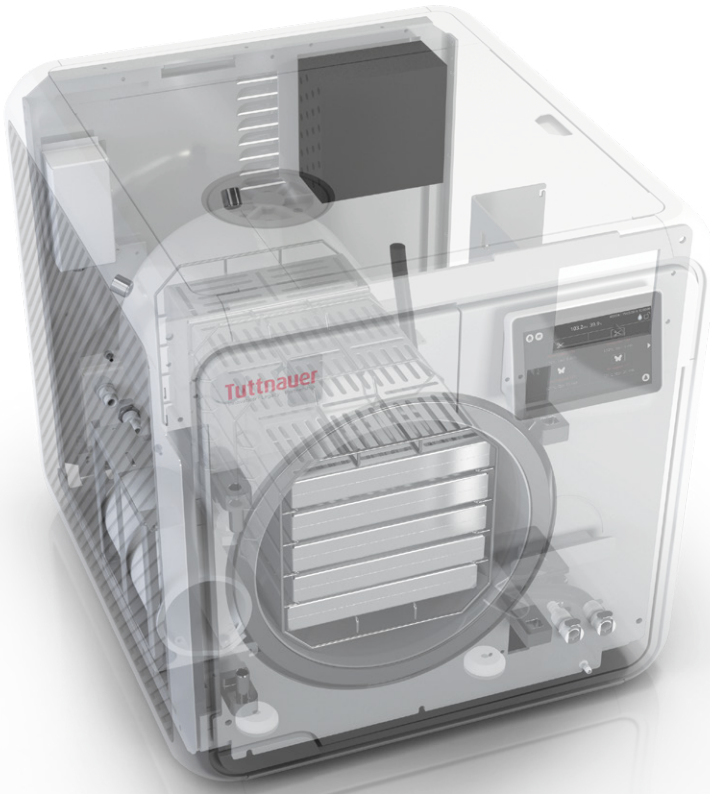
## Optimal chamber capacity

- 5 extra-long trays for wrapped / non-wrapped loads\*
- 3 full dental cassettes + 3 quarter dental cassettes
- More than 75% chamber capacity



## Enhanced serviceability

- Easy to service
- Simple to maintain
- Extended product life



## Eco friendly

- Reduced water consumption by about 40%
- Decreased energy consumption thanks to reduced cycle time
- Lower electricity costs with time-delay settings for machine to work off hours



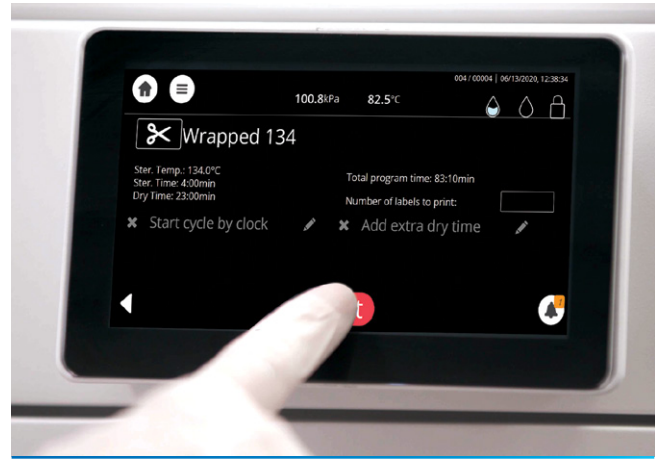
## Real-Time Monitoring T-Edge 10 process via smartphone



**Maximum sterilization.  
Minimum Costs.**



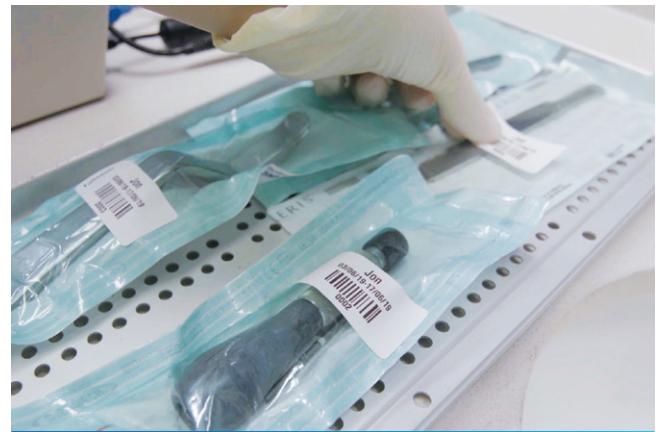
1. Place pouch in chamber.



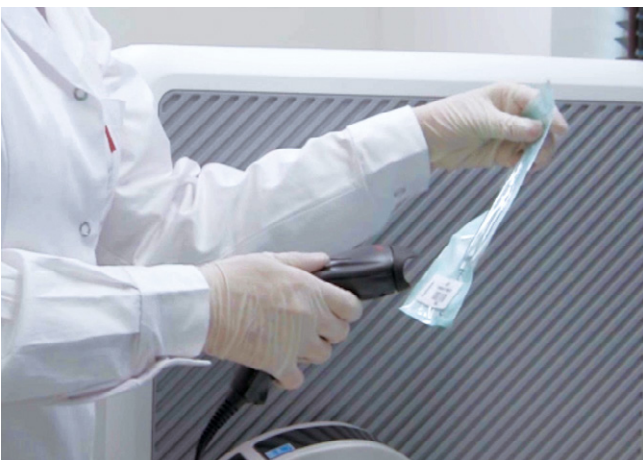
2. Complete sterilization process.



3. Receive barcodes with sterilization data (including expiration date).



4. Apply barcode label to each pouch.







\* Scan barcode data for patient file during treatment, for safety and regulatory purposes.



Process completed



# Technical specifications

Icon	Cycle Program	Load Type	Cycle Time (min)*	Drying Time (min)
	Unwrapped 134	Unwrapped instruments	21	1
	Wrapped 134	Wrapped instruments	25	15
	Unwrapped 121	Unwrapped delicate instruments	32	1
	Wrapped 121	Wrapped delicate instruments	45	15

\* Cycle times are based on:  
 1 kg standard loads (not including drying)  
 Warm chamber

T-Edge 10	
Chamber Size	46 cm depth x 25 diameter
Chamber Volume	23 liters
Dimensions (w x h x d)	48 cm x 50 cm x 58 cm
Weight	50kg
Power Supply	50/60Hz
Power Consumption	2000W
Connections	1 Ethernet port, 4 USB ports, WIFI, integrated automatic water filling and drain connection
Number of Trays	5
Items Supplied	Drain tube, tray holder

# Safety

## is my middle name

**Strict safety regulations require all sterilization processes to be documented, archived and saved. T-Edge 10 offers a range of methods for documenting and saving sterilization cycles:**

- Internal memory for storing up to 1,000 sterilization cycles
- Printouts for saving hard copies
- Ethernet connection for transferring data to your PC or network
- USB outlet for transferring data to your PC or network
- Sophisticated data analysis capabilities using the Tuttnauer RPCR software

You can also set a personalized username and password for each staff member, to increase safety, protection and traceability.

## Safety is the name of the game

**T-Edge 10 meets the following international standards:**

### **Quality Management System:**

- ISO 13485
- Confirms to Medical Device Directive 93/42/EEC

### **Pressure Vessel Certification route:**

- ASME Code section I and section VIII. Div.I, PED 2014/68/EU

### **Electrical Safety:**

- EN/IEC 61010-2-40, IEC 61010-1

### **Electromagnetic Compatibility:**

- EN 61326-1

### **Verification & validation functional tests:**

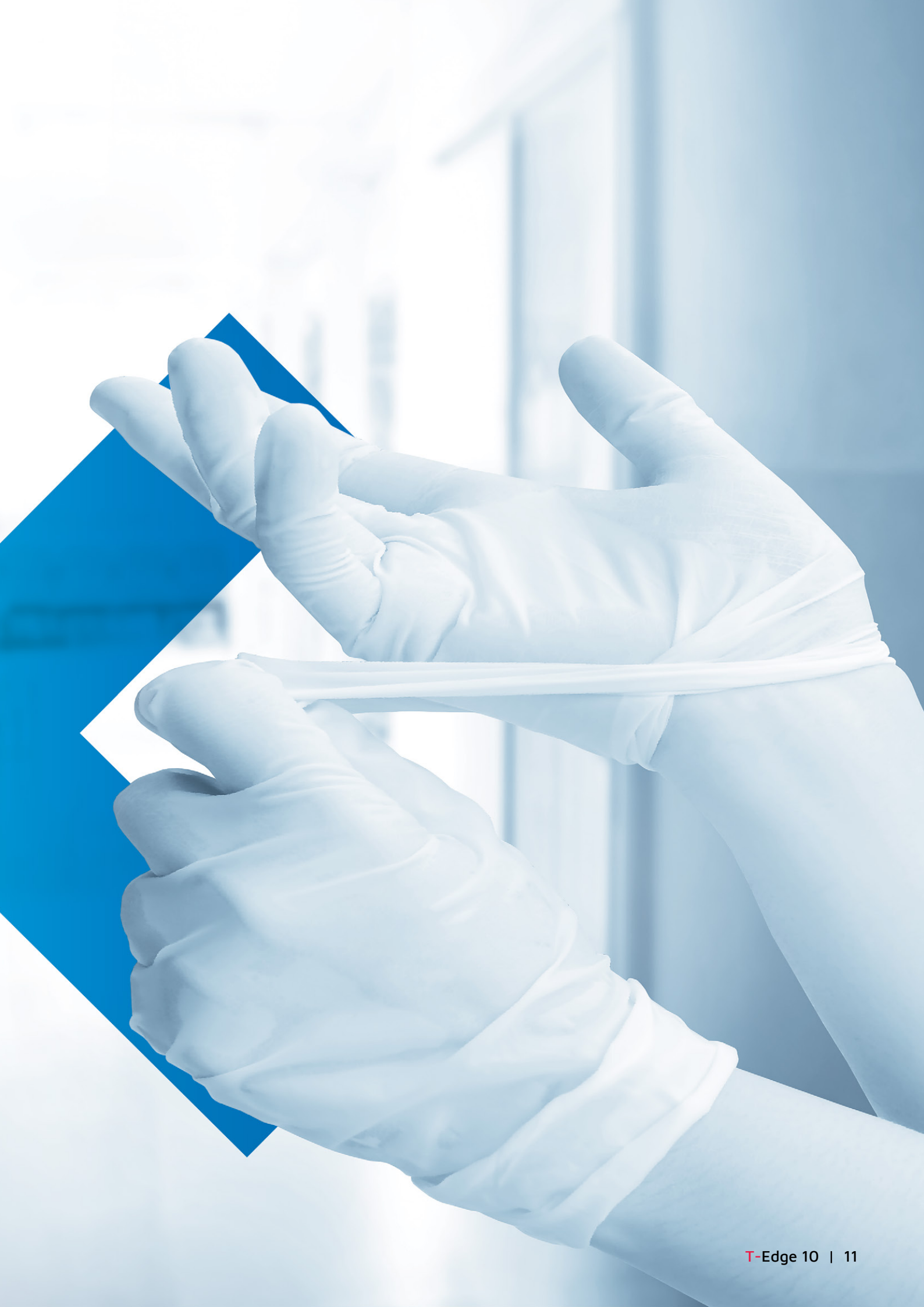
- EN 13060, ANSI/AAMI ST55

### **Software Validation:**

- EN 62304, FDA guidance

### **Usability (User Experience, Human Factor Engineering) tests:**

- IEC 62366-1



# Tuttnauer



Renowned global leaders  
in infection control solutions  
with more than

**90** years'  
experience

Products distributed  
to clinics, hospitals and research  
institutions in more than

**140**  
countries

## TUTTNAUER, YOUR ONE-STOP-SHOP FOR ALL YOUR INFECTION CONTROL NEEDS.

Let me introduce you to our complementary family of sterilization  
products to ensure a comprehensive sterilization process.



Sealing Machine



Washer TIVA2



Water Distiller



Ultrasonic Cleaner



Chamber Clean

### International Sales and Marketing

E-mail: [info@tuttnauer.com](mailto:info@tuttnauer.com)

[www.tuttnauer.com](http://www.tuttnauer.com)

### Tuttnauer Europe b.v.

Hoeksteen 11, 4815 PR  
PO Box 7191, 4800 GD Breda  
The Netherlands  
Tel: +31 765 423 510  
Fax: +31 765 423 540  
E-mail: [info@tuttnauer.nl](mailto:info@tuttnauer.nl)

### Tuttnauer USA Co.

25 Power Drive,  
Hauppauge, NY 11788  
Tel: +800 624 5836, +631 737 4850  
Fax: +631 737 0720  
E-mail: [info@tuttnauerUSA.com](mailto:info@tuttnauerUSA.com)

Distributed by:



Learn from our Experts  
Join our blog [tuttnauer.com/blog](http://tuttnauer.com/blog)

